

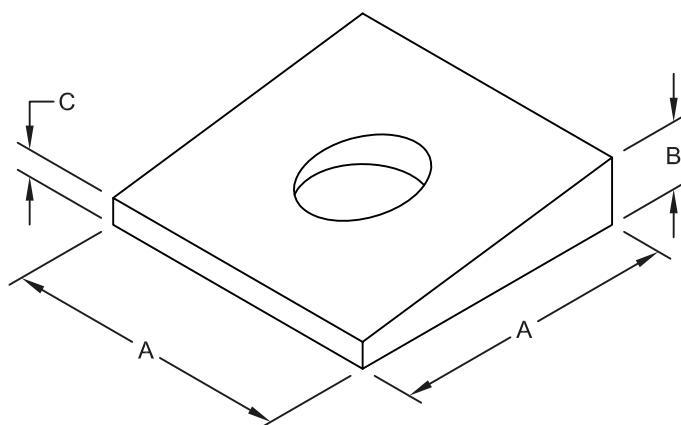
TRIPAC FIG. TP-116 BEVEL WASHER

SIZE RANGE-3/8" THRU 7/8" BOLT

SERVICE-DESIGNED TO MATCH TAPER OF FLANGE OF I-BEAM OR CHANNEL TO PERMIT RIGHT ANGLE FASTENING OF BOLT.

MATERIAL-MALLEABLE IRON, T-304 AND T-316

FINISHES-PLAIN, ELECTRO-GALVANIZED, HDG



DIMENSIONS & WEIGHTS

ROD SIZE	A	B	C	APPROX. WT./100
3/8"	1-1/4"	11/32"	5/32"	9
1/2"	1-1/4"	11/32"	5/32"	9
5/8"	1-1/2"	13/32"	5/32"	14
3/4"	1-1/2"	15/32"	7/32"	16
7/8"	2"	9/16"	7/32"	33

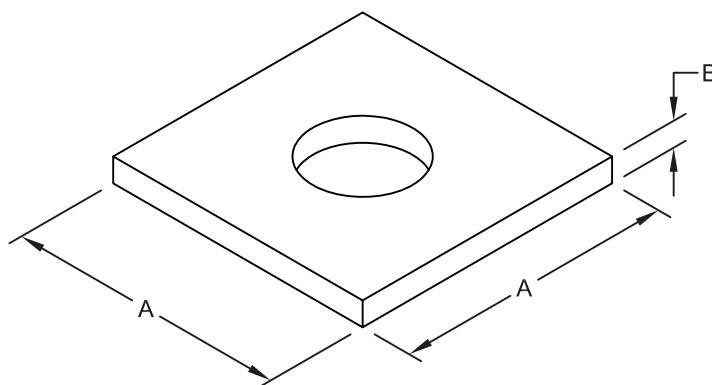
TRIPAC FIG. TP-118 SQUARE WASHER

SIZE RANGE-3/8" THRU 1" BOLT

SERVICE-HEAVY DUTY WASHER FOR USE ON TOP OF CHANNELS OR ANGLES TO SUPPORT HANGER ROD.

MATERIAL-CARBON STEEL, T-304 AND T-316

FINISHES-PLAIN, ELECTRO-GALVANIZED, HDG



DIMENSIONS & WEIGHTS

ROD SIZE	HOLE SIZE	A	B	APPROX. WT./100
3/8"	7/16"	2"	1/4"	27
1/2"	9/16"	2"	1/4"	27
5/8"	11/16"	2-1/2"	1/4"	47
3/4"	13/16"	2-1/2"	3/8"	52
7/8"	15/16"	3"	3/8"	85
1"	1-1/8"	4"	3/8"	160

TRIPAC

475 KLUG CIRCLE • CORONA, CA 92880-6406
(951) 280-4488 • FAX: (951) 272-4445

A DIVISION OF TRIPAC MARKETING, INC.

WWW.TRIPACONLINE.COM