

SUBMITTAL

CASING END SEALS

Manufactured by Pipeline Seal and Insulator, Inc.

Model C Model W Model S

Model "C" Custom Pull-on

Individually designed to accommodate custom carrier/casing combinations. Made of 1/8" thick, specially compounded synthetic rubber for long life and easy installation.

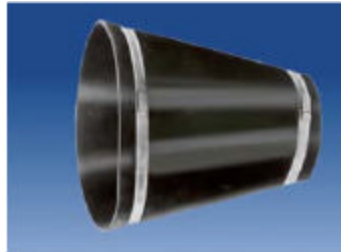
Model "W" Wrap Around

Specifically designed for existing installations. Simply remove plastic backing from self-curing rubber and press exposed surfaces together. Available for all carrier/casing differentials.

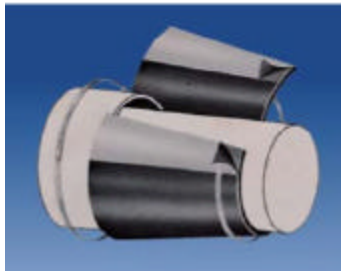
Model "S" Standard Pull-on

Made of special synthetic rubber for long life and easy installation, the highly flexible "S"-shaped seal is available for ANSI steel pipe specifications. Band locating ribs are on the outside, with special sealing ribs on the inside under the band to pre-vent leakage

Model "C"



Model "W"



Model "S"



TRIPAC

475 Klug Circle-Corona, CA. 92880 (951) 280-4488 - Fax: (951) 272-4445