

# SUBMITTAL

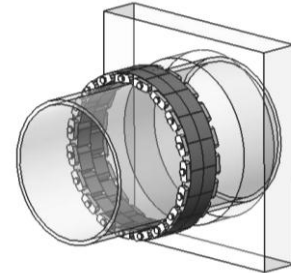
## PEN-SEAL® MODULAR SEALS

Manufactured by Proco Products Inc.

### Material Properties

of Link-Seal Modular Seals

- Hardness Shore a ASTM D-2240 47 ± 3
- Tensile ASTM D-412 1450 psi
- Elongation ASTM D-412 400%
- Compression Set ASTM S-395 15% 22HRS @ 158° F
- Specific Gravity ASTM D-297 1.10



#### Model "C" Link-Seal Modular Seals

**Model "C":** Suitable for use in water direct ground burial and atmospheric conditions. Provides electrical isolation where cathodic protection is required.

**Seal Element:** EPDM (Black)

**Pressure Plates:** Reinforced Nylon Polymer

**Bolts & Nuts:** Steel with 2-part zinc (ASTM B633) dichromate and proprietary corrosion inhibiting coating

**Temperature Range:** -40 to +250° F

#### Model "S-316" Link-Seal Modular Seals

**Model "S-316":** For chemical processing and waste water treatment. EPDM rubber is resistant to most inorganic acids and alkalis, some organic chemicals (Acetone, Alcohol, Ketones).

**Seal Element:** EPDM (Black)

**Pressure Plates:** Reinforced Nylon Polymer

**Bolts & Nuts:** Type 316 Stainless Steel (ASTM F593 – F594-95)

**Temperature Range:** -40 to +250° F

**TRIPAC**

475 Klug Circle-Corona, CA. 92880 (951) 280-4488 - Fax: (951) 272-4445