

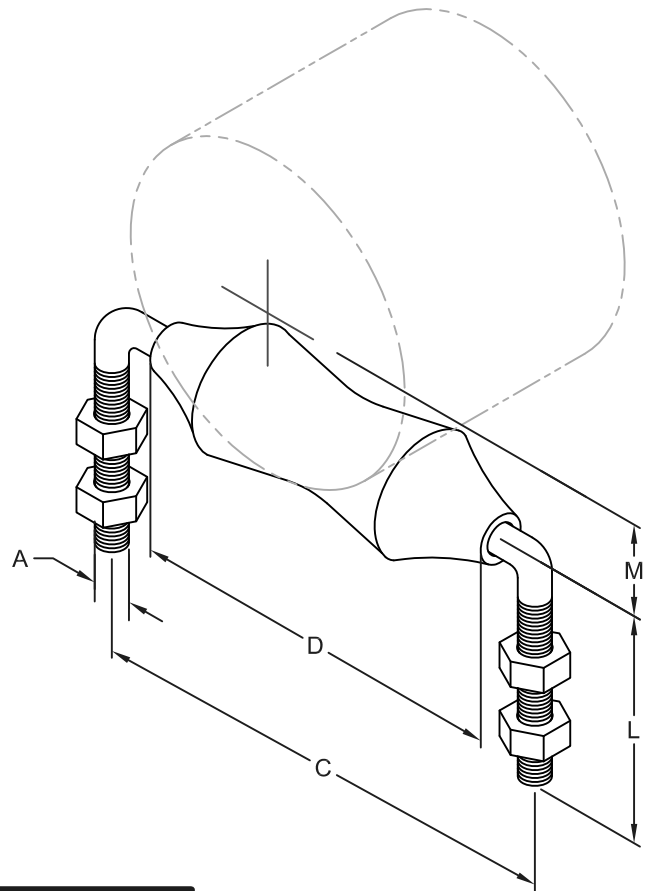
TRIPAC FIG. TP-271 ADJUSTABLE ROLLER SUPPORT

SIZE RANGE-2" THRU 16" PIPE

SERVICE-DESIGNED FOR SUPPORT OF PIPE WHERE LONGITUDINAL MOVEMENT OF PIPE MAY OCCUR DUE TO EXPANSION AND CONTRACTION, AND WHERE VERTICAL ADJUSTMENT MAY BE NECESSARY.

MATERIAL-CARBON STEEL ROD WITH CAST IRON ROLLER.

FINISHES-PLAIN, ELECTRO-GALVANIZED, HDG



DIMENSIONS & WEIGHTS

PIPE SIZE	A	C	D	L	M	MAX. REC. LOAD LBS.	WEIGHT EACH (LBS.)
2"	3/8"	4-1/2"	2-5/8"	4-1/2"	1-5/8"	300	.85
2-1/2"	1/2"	5"	3-1/8"	4-1/2"	1-15/16"	600	1.40
3"	1/2"	6-1/8"	3-3/4"	4-1/2"	2-1/4"	600	1.65
3-1/2"	1/2"	6-1/2"	4-1/4"	4-1/2"	2-9/16"	600	1.63
4"	1/2"	7-3/8"	4-3/4"	4-1/2"	2-13/16"	700	1.85
5"	5/8"	8-1/2"	5-13/16"	4-1/2"	3-7/16"	700	2.92
6"	3/4"	10"	6-7/8"	4-1/2"	4-1/16"	1000	4.64
8"	7/8"	12"	8-7/8"	5-1/4"	5-1/8"	1300	7.27
10"	7/8"	14"	11"	5-1/2"	6-3/8"	1700	10.24
12"	7/8"	16"	13"	6"	7-5/16"	2300	12.30
14"	1-1/8"	17-1/2"	14-1/4"	7"	8-7/16"	3075	21.36
16"	1-1/4"	19"	16-1/4"	8"	9-1/2"	3075	27.70

TRIPAC

475 KLUG CIRCLE • CORONA, CA 92880-6406
(951) 280-4488 • FAX: (951) 272-4445

A DIVISION OF TRIPAC MARKETING, INC.

WWW.TRIPACONLINE.COM