

# TRIPAC FIG. TP-427 U-PIPE SLIDE PTFE

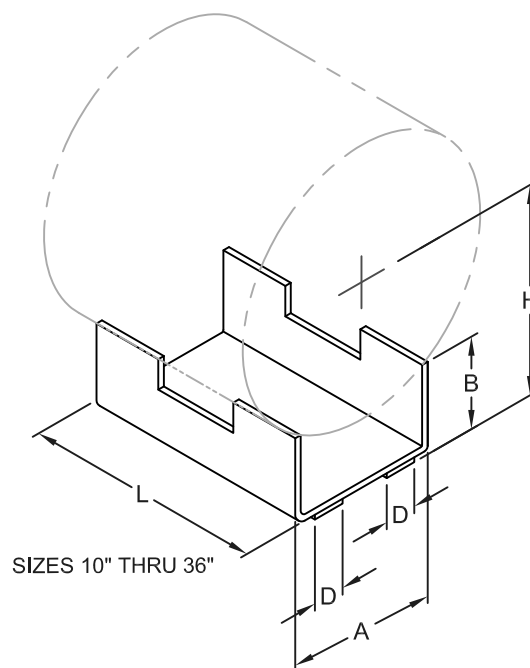
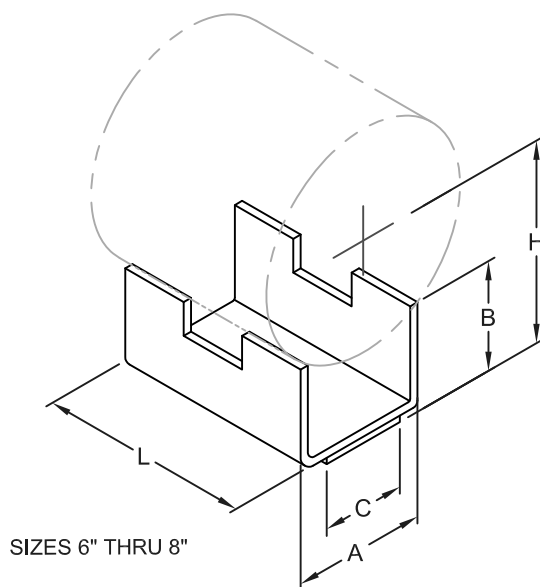
**SIZE RANGE**-6" THRU 36" PIPE

**SERVICE**-DESIGNED FOR SUPPORTING WITH A LOW CENTER OF GRAVITY FOR GREATER STABILITY ON ALL SIZES OF PIPE WITH BI-DIRECTIONAL MOVEMENTS. RECOMMENDED FOR USE WHERE CONCENTRATED AND ECCENTRIC LOADS TEND TO ROTATE THE PIPE. CAN BE WELDED OR CLAMPED TO THE PIPE. USE ONLY WITH FIG. TP-429 SLIDE PLATE

**NOMINAL INSULATION THICKNESS**- PIPE SIZES 6" AND 8", 2-1/2"; PIPE SIZES 10" THRU 20" 3"; PIPE SIZES 24" THRU 36", 3-1/2"

**MATERIAL**-CARBON STEEL AND PTFE

**FINISHES**-PLAIN, ELECTRO-GALVANIZED, HDG, OR STAINLESS STEEL MATERIALS



## DIMENSIONS & WEIGHTS

PIPE SIZE	A	B	C	D	H	L	APPOX. WT./100	MAX * LOAD #	APPROX. WT./EACH
6"	4"	3-1/4"	2-1/2"	-	6"	6"	4	7000	3
8"	4"	3-1/4"	2-1/2"	-	7-3/16"	6"	4	7000	3
10"	6"	3-3/4"	-	1-1/2"	8-1/4"	9"	7	12000	13
12"	6"	3-3/4"	-	1-1/2"	9-3/8"	9"	7	12000	13
14"	7"	3-3/4"	-	1-1/2"	9-3/4"	9"	7	12000	14
16"	7"	3-3/4"	-	1-1/2"	10-7/8"	9"	7	12000	14
18"	9"	3-3/4"	-	2"	11-9/16"	9"	7	16000	17
20"	9"	3-3/4"	-	2"	12-11/16"	9"	7	16000	17
24"	12"	4"	-	3"	14-5/8"	12"	10	24000	34
30"	13"	4-1/4"	-	3"	17-3/4"	12"	10	24000	31
36"***	18"	4-1/4"	-	4"	19-7/8"	12"	10	24000	48

\* BASED ON USING 2" WIDE PTFE SLIDE PLATE AT 70°F TEMPERATURE

\*\* DENOTES USE OF STIFFENERS

# TRIPAC

475 KLUG CIRCLE • CORONA, CA 92880-6406  
(951) 280-4488 • FAX: (951) 272-4445

A DIVISION OF TRIPAC MARKETING, INC.

WWW.TRIPACONLINE.COM