

SUBMITTAL

ANCHOR BOLTS, STUDS & U-BOLTS T-316 & B8M

18 Chromium, 10 Nickel, 2 Molybdenum (ASI T-316)

Chemical Requirements

Are By the "Heat Analysis" Method

- Carbon max 0.08
- Manganese max 2.00
- Phosphorous max 0.045
- Sulfur max 0.030
- Silicon max 1.00
- Chromium 16-18
- Nickel 10-14
- Molybdenum 2-3

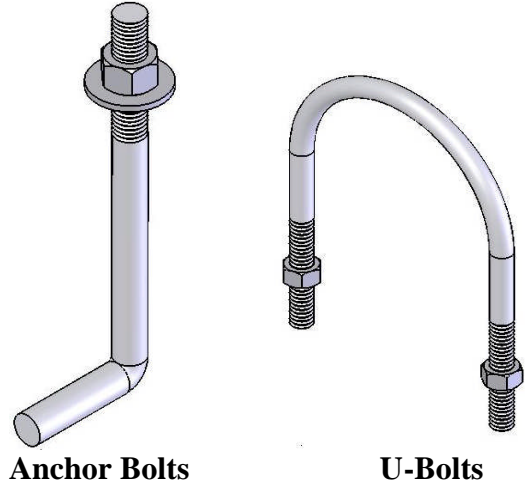
Mechanical Requirements

- Hardness Rockwell Min B80-C32
- Tensile strength (KSI) Min 85
- Yield Strength (KSI) Min 45
- Elongation 25

- Hex Nuts ASTM F594 (ASME B18.2.2) Heavy Hex Nuts ASTM A194 BM (ASME B18.2.2)
 T-316 Stainless Steel Washers

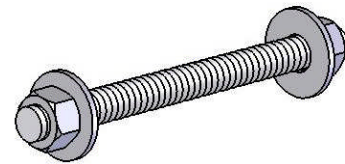
Dimensional Data

- Nonheaded Anchor bolts, either bent or straight, having properties conforming to specification F593 (T-316) studs and intended for structural anchorage purposes.
- Unless otherwise specified, threads shall be the coarse thread series, as specified in the latest issue of ANSI/ASME B1.1, page A-26.
- Having a class 2A tolerance.



Anchor Bolts

U-Bolts



Stud

TRIPAC

475 Klug Circle-Corona, CA. 92880 (951) 280-4488 - Fax: (951) 272-4445